



## CAPABILITY STATEMENT

### PROFILE AND CORE COMPETENCIES

#### COMPANY DATA

**CVGCI Duns No:** 968834015

**CVGCI CAGE Code:** 6XFZ1

**CVGCI Federal Certification:**

CBE

8A SBA (Applied)

DBE (Applied),

LBE, SBE, DZE, ROB

**General Contractor Licensed in:**

DC • MD • VA

#### Bonding Capabilities

**\$450,000 and above**

#### NAICS CODES

**Primary Code:** 236115

**Secondary Codes:**

236220	238910
238310	238990
238140	236116
238160	236190
238320	238150
238330	238350
238340	238390

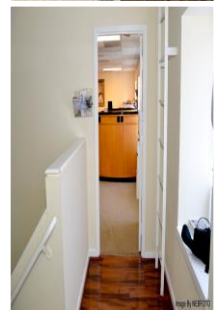
**Standard Industrial Classification (SIC)**

1522,1542,1752,1771



Capital View General Construction is one of many District of Columbia's smallest assets. Our industry is challenging and we work hard at meeting those challenges head on. With contractual knowledge and resources to deliver property and home renovation, Remodeling, repairs, retaining walls, and essential property development, Capital View General Construction Inc. has an upstanding reputation for delivering a quality project on time, and within budget.

CVGCI is not only a construction company, it is innovation of what the future is to become in the construction/development industry-but not Limited to managing and operating new Proposals of growth account /budget Management , architectural design for our clientele. We Serve public and private entities alike.



#### SERVICES

- ✓ General Contracting
- ✓ Painting
- ✓ Facilities Management
- ✓ Site Work/Site Utilities
- ✓ Site Cleaning up
- ✓ Demolition
- ✓ Construction management
- ✓ Design/Build
- ✓ LEED Sustainable Construction
- ✓ Site Concrete
- ✓ Drywall
- ✓ Flooring

[www.CVGCI.com](http://www.CVGCI.com)

# CAPITAL VIEW GENERAL CONSTRUCTION INC. (CVGCI)

## CONTACT INFORMATION

### Capital View General Construction Inc.

1618 7<sup>th</sup> St. NW Suite 102  
Washington, DC 20001  
Phone: 202-621-2247  
Fax: 202-446-0868  
Website: [www.CVGCI.com](http://www.CVGCI.com)

### Capital View General Construction Inc.

1025 Thomas Jefferson St. NW Suite 180G  
Washington, DC 20007  
Phone: 202-249-7509  
Fax: 202-446-0868

## POINT OF CONTACT

### Steve Kalifa

#### Managing Partner

Direct: 703- 725-2240  
Email: [Steve@cvgci.com](mailto:Steve@cvgci.com)

### Efrata Solomon

#### Senior Project Director

Direct: 571-492-1240  
Email: [efrata@cvgci.com](mailto:efrata@cvgci.com)

● DESIGN ● BUILD ● COMPLETE ● DELIVER ●



[www.CVGCI.com](http://www.CVGCI.com)